



Department of  
Emergency  
Medicine



WHO Collaborating  
Centre for Emergency  
and Trauma Care

# The Global View

World Health Organization and Emergency Care Systems

Andi Tenner, MD, MPH, FACEP

Co-Director, UCSF WHO Collaborating Centre for  
Emergency and Trauma Care

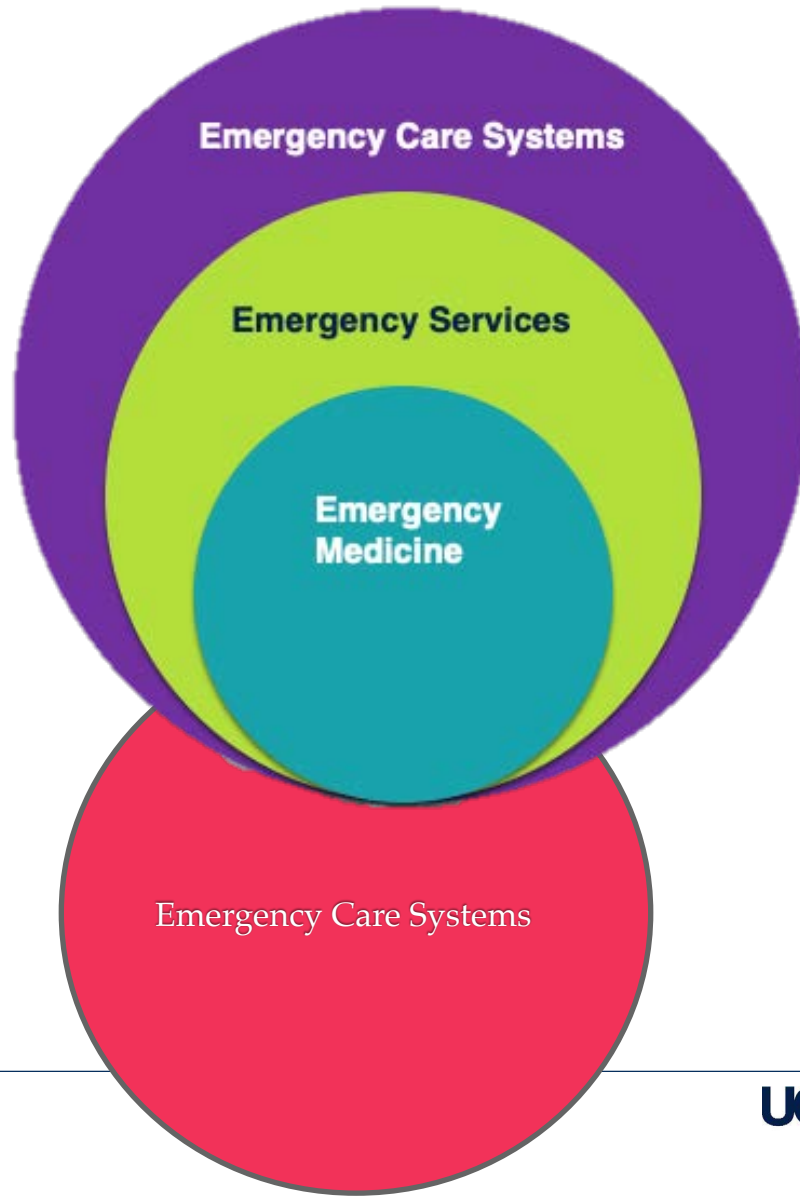
3/3/20









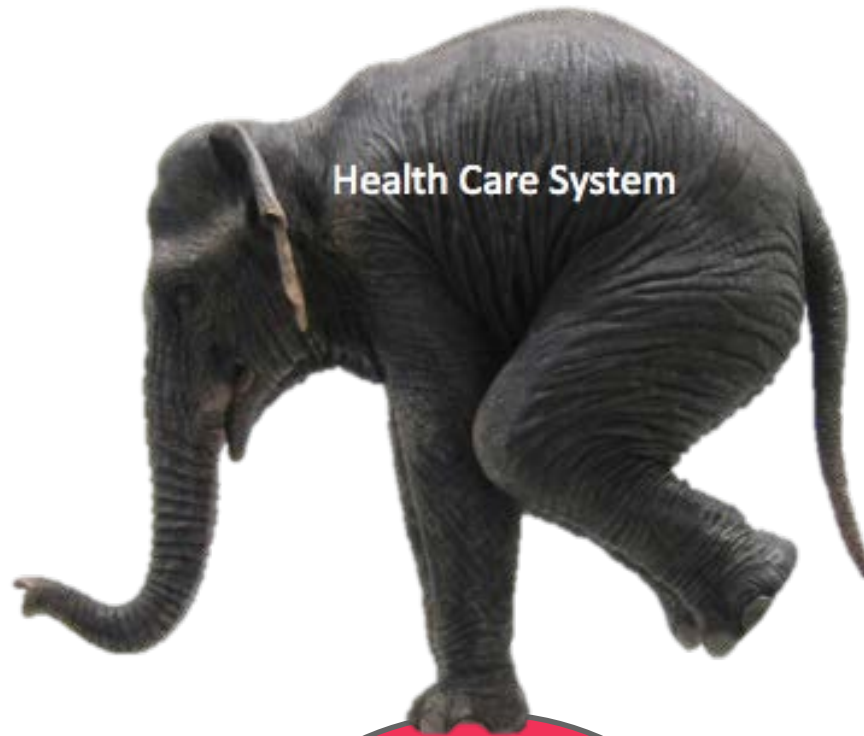


**Emergency Care Systems**

**Emergency Services**

**Emergency  
Medicine**

Emergency Care Systems

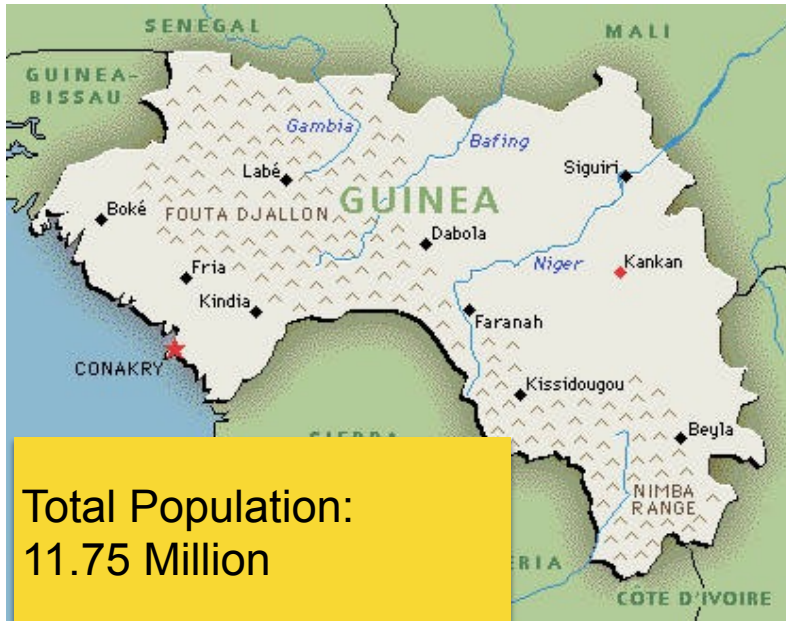


Health Care System

Emergency Care Systems



# Total deaths from Ebola: 11,301



Total Population:  
11.75 Million



Total Population:  
6.1 Million



Total Population:  
4.3 Million

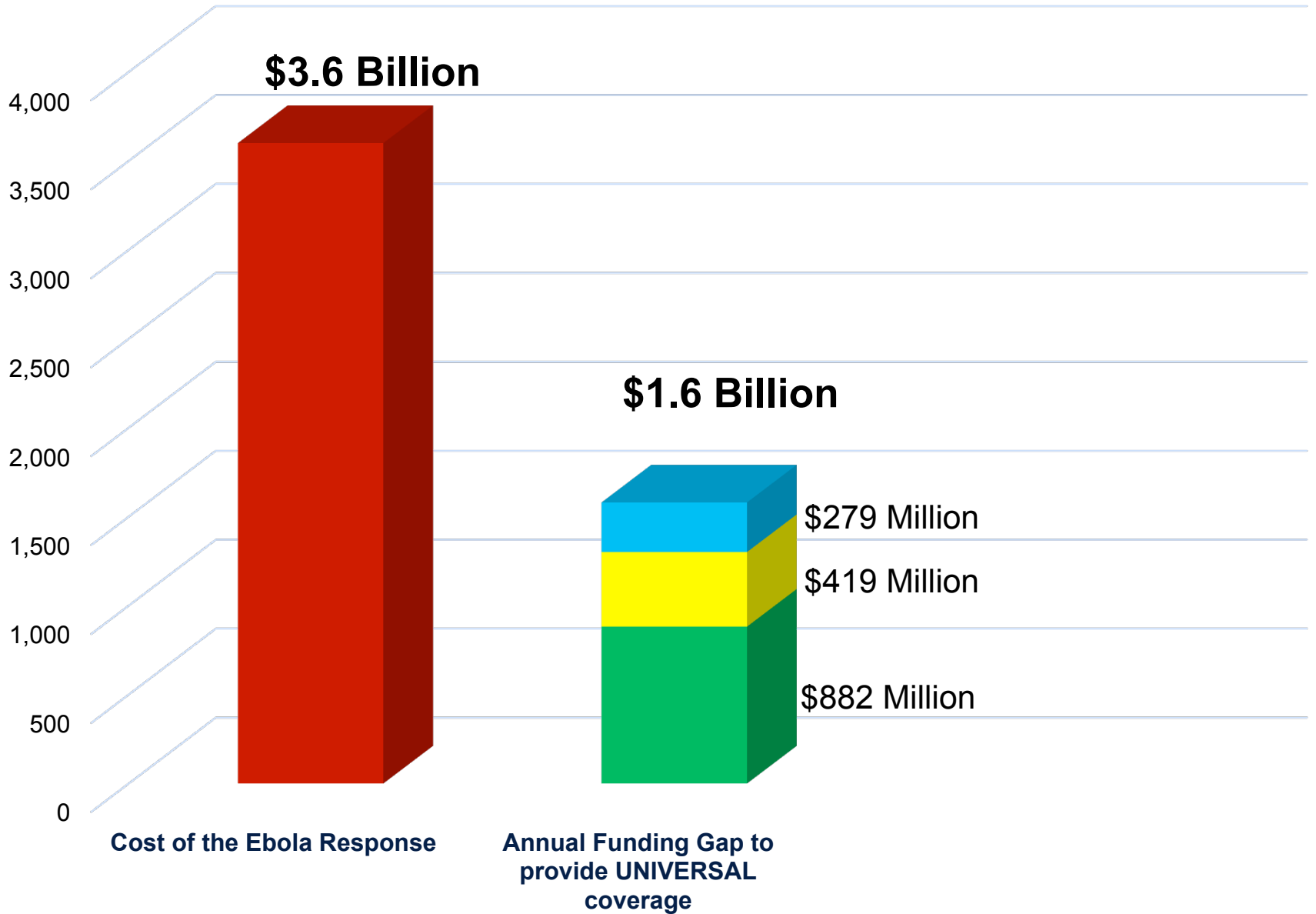


**Total deaths from Ebola:  
11,301**

**Est. excess deaths from Malaria:  
10,900**

**Malaria's mortality ranking:  
#7**

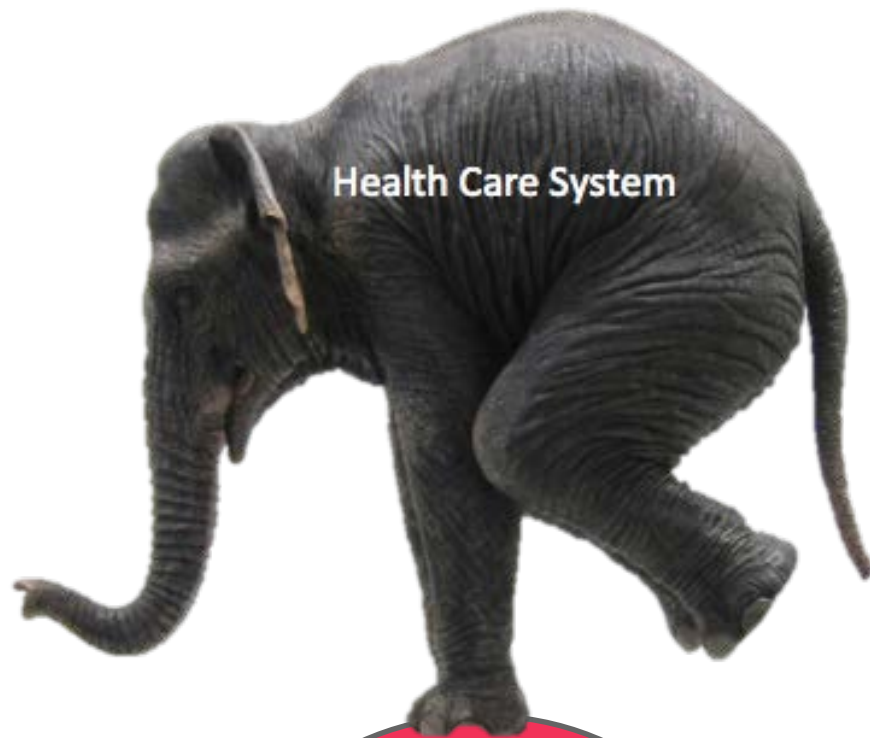
# The Cost of Waiting for the Crisis



■ All Countries ■ Guinea ■ Sierra Leone ■ Liberia

**UCSF** Department of  
Emergency  
Medicine

 WHO Collaborating  
Centre for Emergency  
and Trauma Care



Health Care System

Emergency Care Systems

Training

System  
Tools

How many lives do you think we could save?

50%





UNITED NATIONS



**World Health  
Organization**



**SEVENTY-SECOND WORLD HEALTH ASSEMBLY**

**WHA72.16**

**Agenda item 12.9**

**28 May 2019**

# **Emergency care systems for universal health coverage: ensuring timely care for the acutely ill and injured**

The Seventy-second World Health Assembly,

Having considered the report on emergency care systems for universal health coverage: ensuring timely care for the acutely ill and injured;<sup>1</sup>

Noting the importance of the organization of the health system as a whole, including by distinguishing between elective services and care, non-elective services and care, and emergency



# EMERGENCY CARE SYSTEM FRAMEWORK

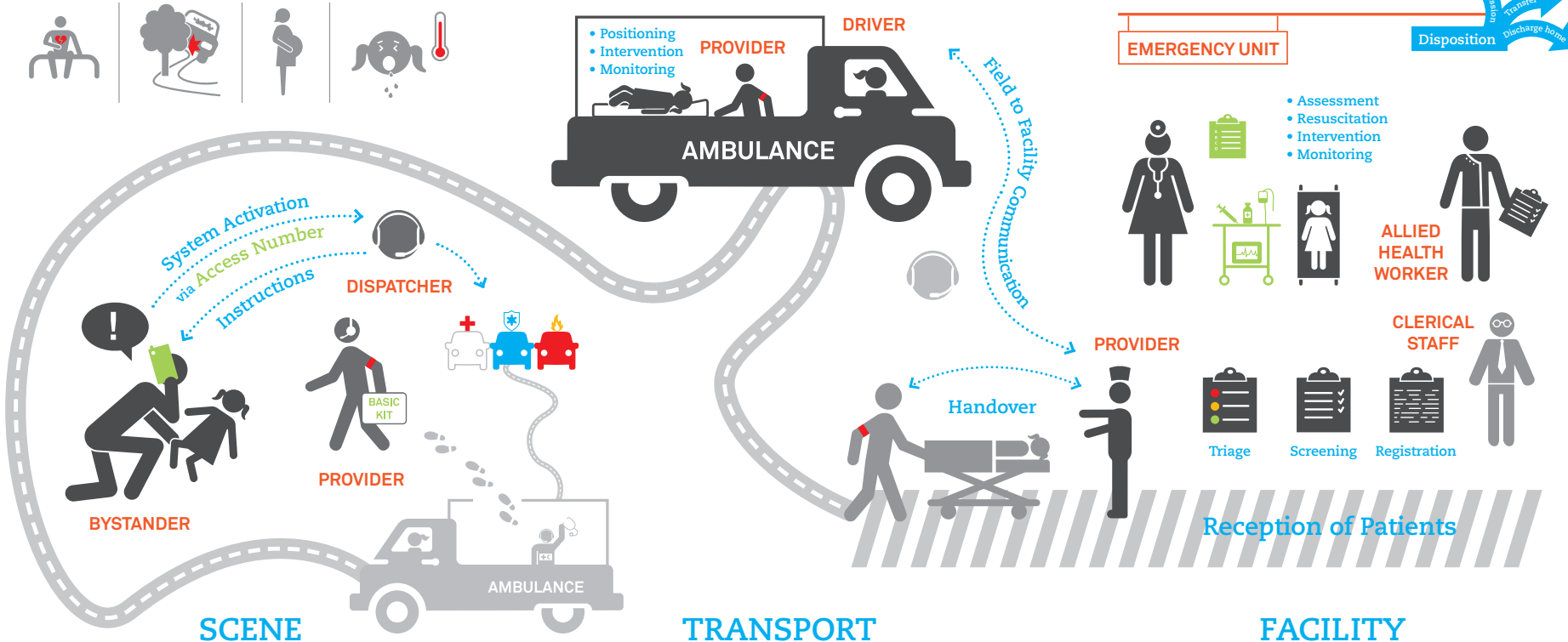
All around the world, acutely ill and injured people seek care every day. Frontline providers manage children and adults with injuries and infections, heart attacks and strokes, asthma and acute complications of pregnancy. An integrated approach to early recognition and management reduces the impact of all of these conditions. Emergency care could address over half of the deaths in low- and middle-income countries.



■ HUMAN RESOURCES   
 ■ FUNCTIONS   
 ■ EQUIPMENT, SUPPLIES, INFORMATION TECHNOLOGIES



COMMUNICATION TECHNOLOGIES



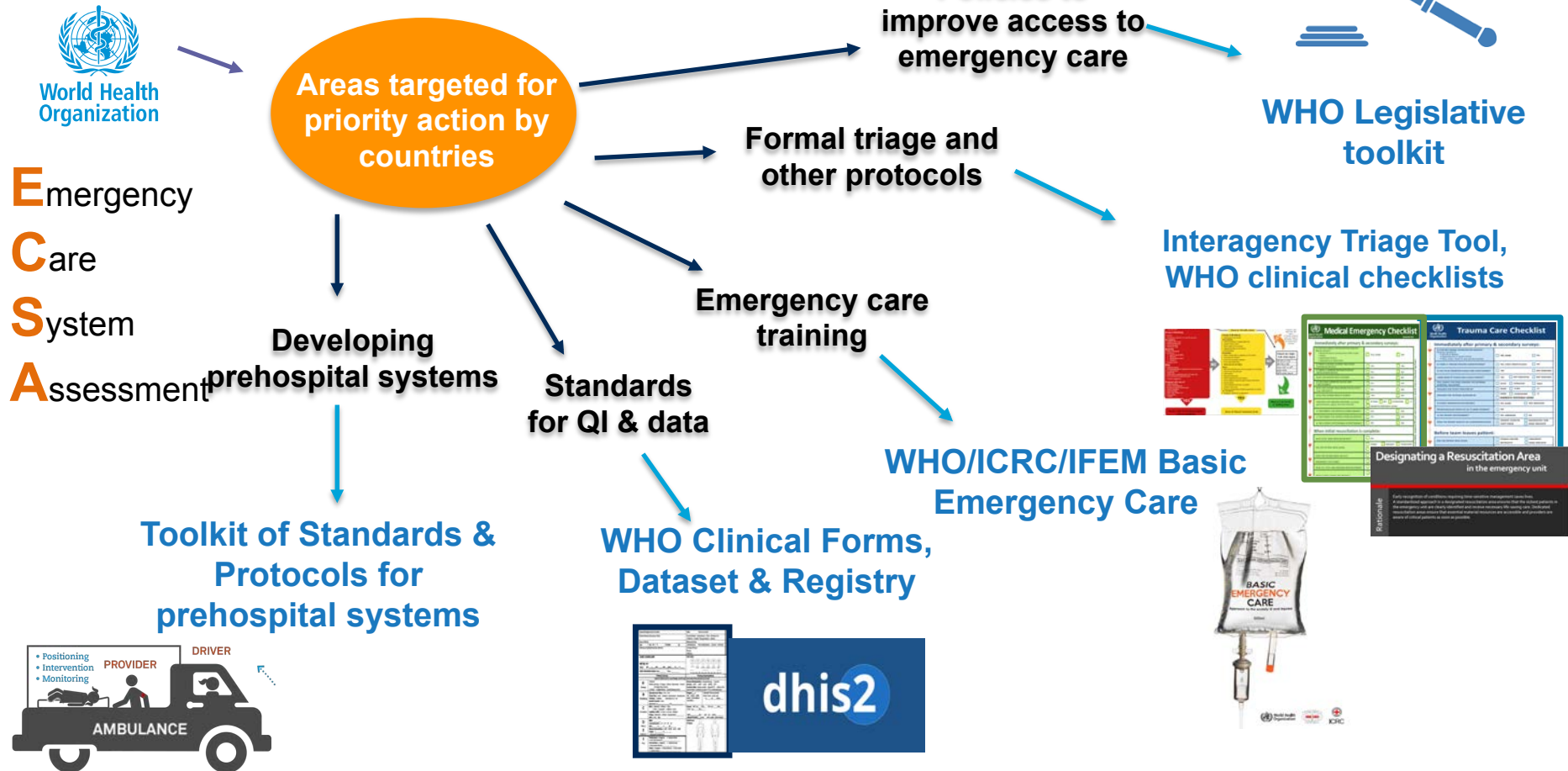
- BYSTANDER RESPONSE
- DISPATCH
- PROVIDER RESPONSE

- PATIENT TRANSPORT
- TRANSPORT CARE

[www.who.int/emergencycare](http://www.who.int/emergencycare)

- RECEPTION
- EMERGENCY UNIT CARE
- DISPOSITION
- EARLY INPATIENT CARE

# Emergency care resources based on priorities from countries



# Essential Resources for Emergency Care

- Guidance for processes, design, data, protocols and resources needed in emergency care systems
- For policymakers, planners and health professionals
- Comprehensive list of resources for each level of a health system
  - Emergency care services packages
  - Essential medications
  - Consumable and durable equipment





ICRC



WHO Collaborating  
Centre for Emergency  
and Trauma Care



# Thank you!

<https://emergencycare.ucsf.edu>

[Andrea.Tenner@ucsf.edu](mailto:Andrea.Tenner@ucsf.edu)

or

[emergencycare@ucsf.edu](mailto:emergencycare@ucsf.edu)

