



FOR FURTHER INFORMATION, THE SCHEDULE, AND TO PRE-REGISTER ONLINE:

SPRING 2023

# osherminimed.ucsf.edu

Follow us on Facebook and Twitter

 UCSFOsherMiniMedSchool  OsherMiniMed

Tuesday evenings, May 2 - June 6 (7:00 – 8:30 pm)

## Cutting Edge Advances from UCSF Graduate Students: Solving the Mysteries of Science

Wednesday evenings, May 3 - June 7 (7:00 – 8:30 pm)

## Holistic Approaches to Mental Health and Healing

### DIRECTOR

**Robert B. Baron, MD, MS**

Professor of Medicine

Director, UCSF Osher Mini Medical School for the Public

## live stream UCSF Osher Mini Medical School

PRE-REGISTER NOW AT [osherminimed.ucsf.edu](https://osherminimed.ucsf.edu)

**Interactive Webinar:** The UCSF Osher Mini Medical School for the Public spring quarter will continue to be live-streamed by popular demand. Opportunities will be available to interact with the speakers on each evening. Schedule and details are available on the website.

---

UCSF Osher Mini Medical School for the Public

Office of CME, Box 0742

490 Illinois Street, Floor 8

San Francisco, CA 94143





## Cutting Edge Advances from UCSF Graduate Students: Solving the Mysteries of Science



**Tuesday evenings**  
**May 2 – June 6**

**7:00 – 8:30 pm**

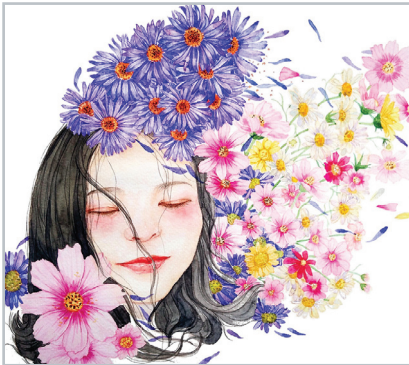
**Live Streamed**

Have you ever been curious about the work carried out by graduate students while pursuing their PhD? Attend these presentations and hear firsthand accounts of the groundbreaking research being conducted by some of the highly skilled and intelligent minds in the nation, in fields such as biomedical and social sciences. Each talk will expand your knowledge on the contribution of these students towards enhancing human health and the frameworks involved in the practice of healthcare...from lab to bedside.

**COURSE CHAIRS** **Nicquet Blake, PhD**  
Vice Provost, Student Academic Affairs  
Dean, Graduate Division, UCSF

**David Morgan, PhD**  
Vice Dean of Research  
Professor, Department of Physiology

## Holistic Approaches to Mental Health and Healing



**Wednesday evenings**  
**May 3 – June 7**

**7:00 – 8:30 pm**

**Live Streamed**

This course will allow the learner to engage with integrative theories and models of mental health care that are housed in wellness, resilience, community, and equity. Participants will learn to identify and connect how mental health and wellness starts with structural (economic/political/systemic) and community level interventions as well as individual supports. The course will help learners to understand models of care that provide integrative, holistic mental health care through a lens of health equity and apply the principles of holistic mental health and wellness in participants' lives or community efforts.

**COURSE CHAIR** **Jen Matthews, MD**  
Associate Professor of Pediatrics  
Pediatric Integrative Medicine Director  
UCSF Benioff Children's Hospital Oakland